



Real Time Hydrographic and Environmental Information Service

Infrastructure



Co-financed by the Connecting Europe Facility of the European Union

Gravity surveys

Hydrographic surveys

Geoid model

Baltic Sea Chart Datum 2000

Bathymetry database

Oceanographic observations

Oceanographic model



**COPERNICUS
MARINE ENVIRONMENT MONITORING SERVICE**
Providing PRODUCTS and SERVICES for all marine applications

S-100 products



Bathymetry

S-101 ENC
S-102 Bathymetric Surface

Water Level

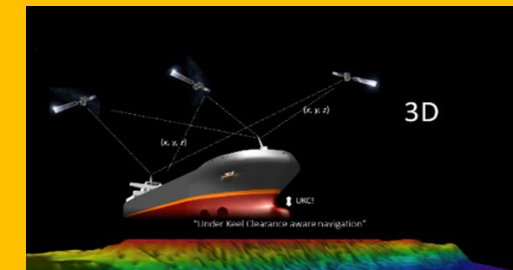
S-104 Water Level Information for Surface Navigation

Surface Currents

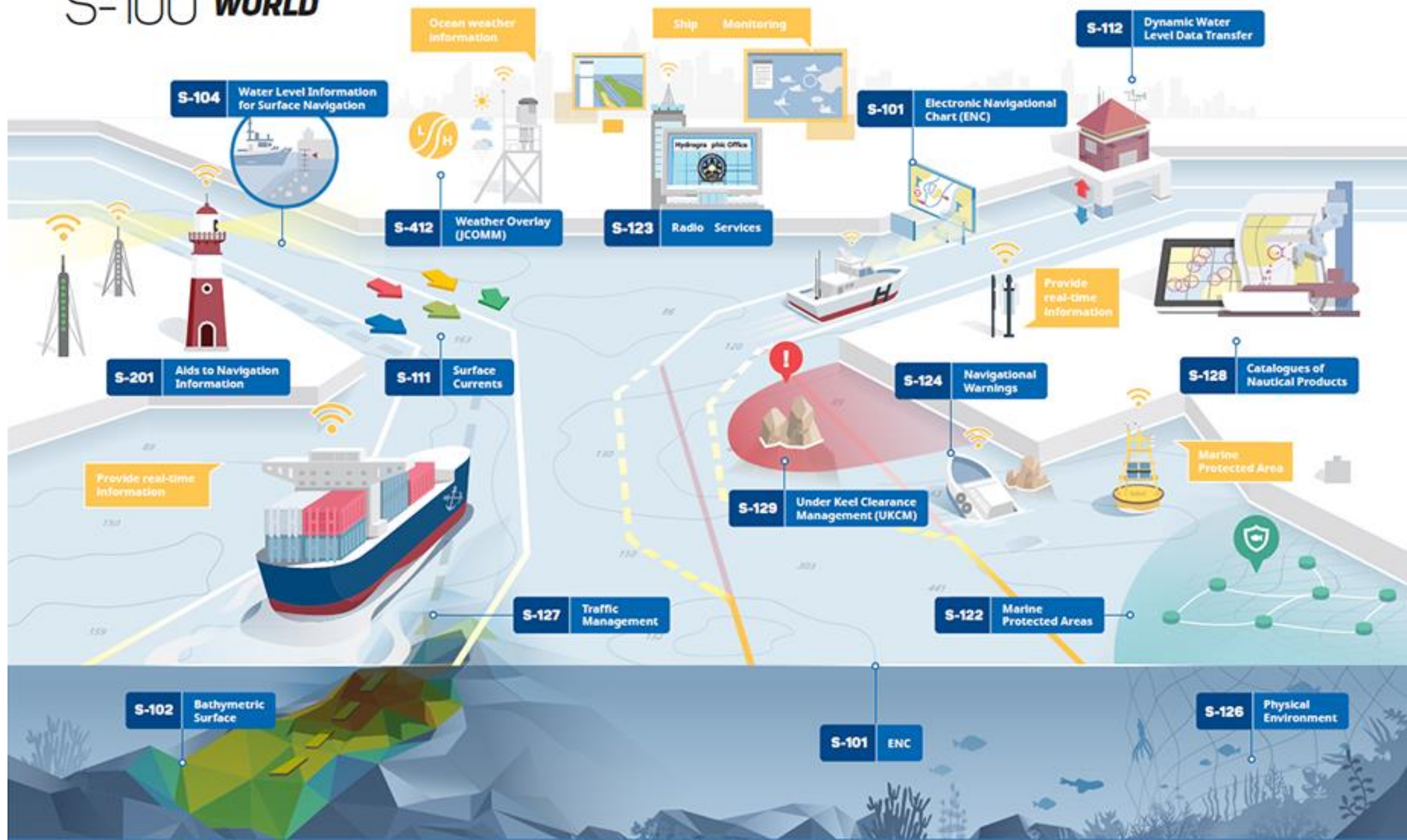
S-111 Surface Currents

Under Keel Clearance

S-129 Under Keel Clearance Management (UKCM)



S-100 WORLD



S-100 products with special focus

Table A – IHO list of S-100 products with special focus	
First step – Route monitoring mode	
S-101	Electronic Navigational Chart (ENC)
S-102	Bathymetric Surface
S-104	Water Level Information for Surface Navigation
S-111	Surface Currents
S-124	Navigational Warnings
S-129	Under Keel Clearance Management
Critical Framework	
	IHO Geospatial Information Registry
S-98	Interoperability Specification
S-100	Universal Hydrographic Data Model
S-128	Catalogue of Nautical Products
S-164	Test Data Set for S-100 and ECDIS Type Approval
Second step – Route planning mode	
S-122	Marine Protected Areas
S-123	Marine Radio Services
S-125	Marine Aids to Navigational (AtoN)
S-126	Marine Physical Environment
S-127	Marine Traffic Management
S-131	Marine Harbour Infrastructure

S-100 Timeline

