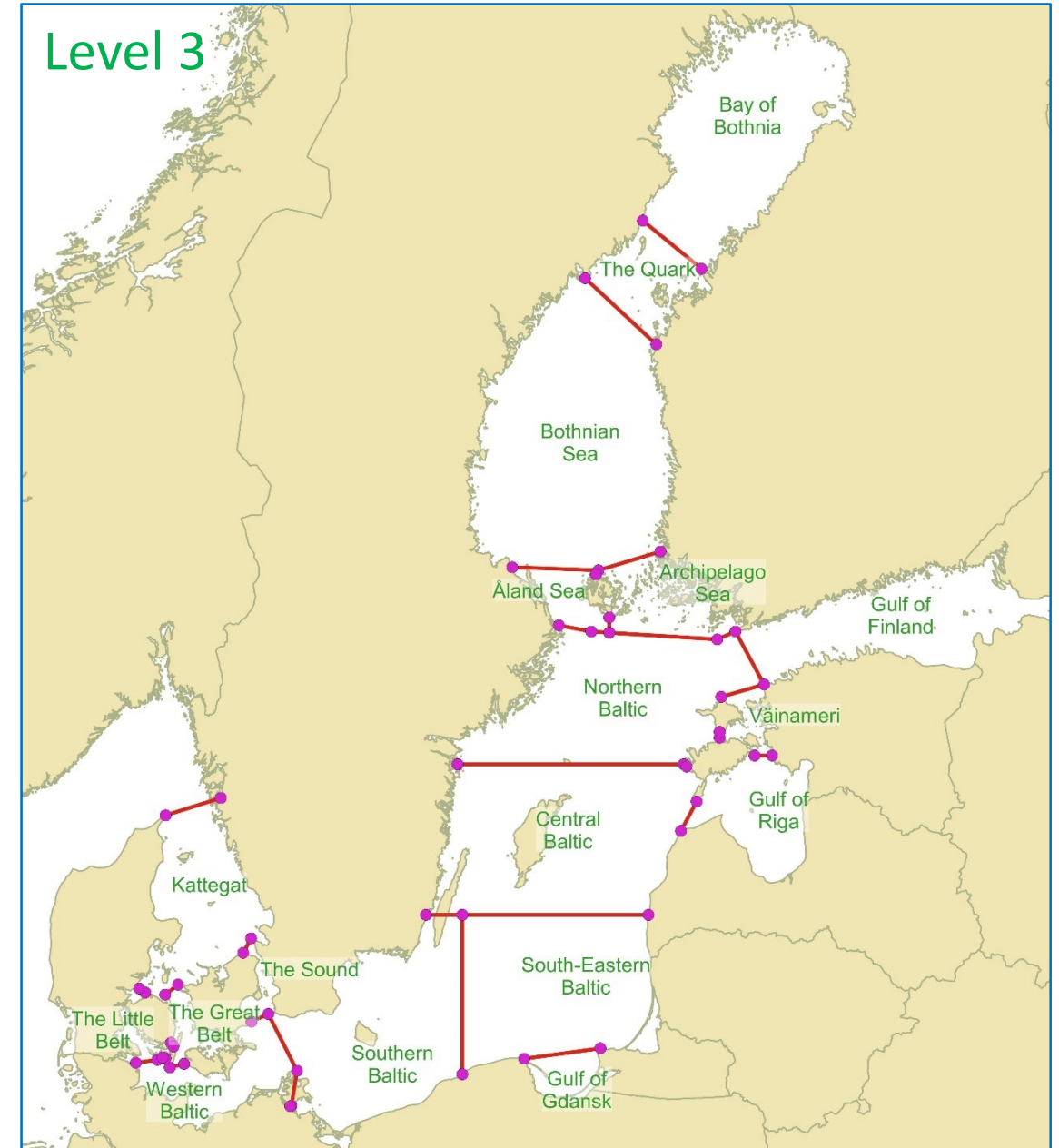


Baltic Sea sub-areas.



All lines between the given coordinates in the following tables is to be considered as Geodetic lines, In the event that the end coordinate of a line does not end up on mainland the lines can be extended up on land.



Level 3

Kattegat

	Name	Lat	Lon	The border point	Country
1	Skagen	57°45.0'N	10°36.0'E	Kattegat, North Sea	DK
2	Knaverstad	57°57.0'N	11°47.5'E	Kattegat, North Sea	SE
3	Gilbjerg Hoved	56°7.7'N	12°16.44'E	Kattegat, The Sound	DK
4	Kullen Point	56°18.15'N	12°26.73'E	Kattegat, The Sound	SE
5	Røsnæs	55°44.6'N	10°52.1'E	Kattegat, The Great Belt	DK
6	Fyns Hoved	55°37.24'N	10°35.45'E	Kattegat, The Great Belt	DK
7	Æbelø	55°38.77'N	10°9.76'E	Kattegat, The Little Belt	DK
8	Bjørnsknude	55°41.81'N	10°1.78'E	Kattegat, The Little Belt	DK



Level 3

The Great Belt, The Sound,

The Little Belt,

Western Baltic

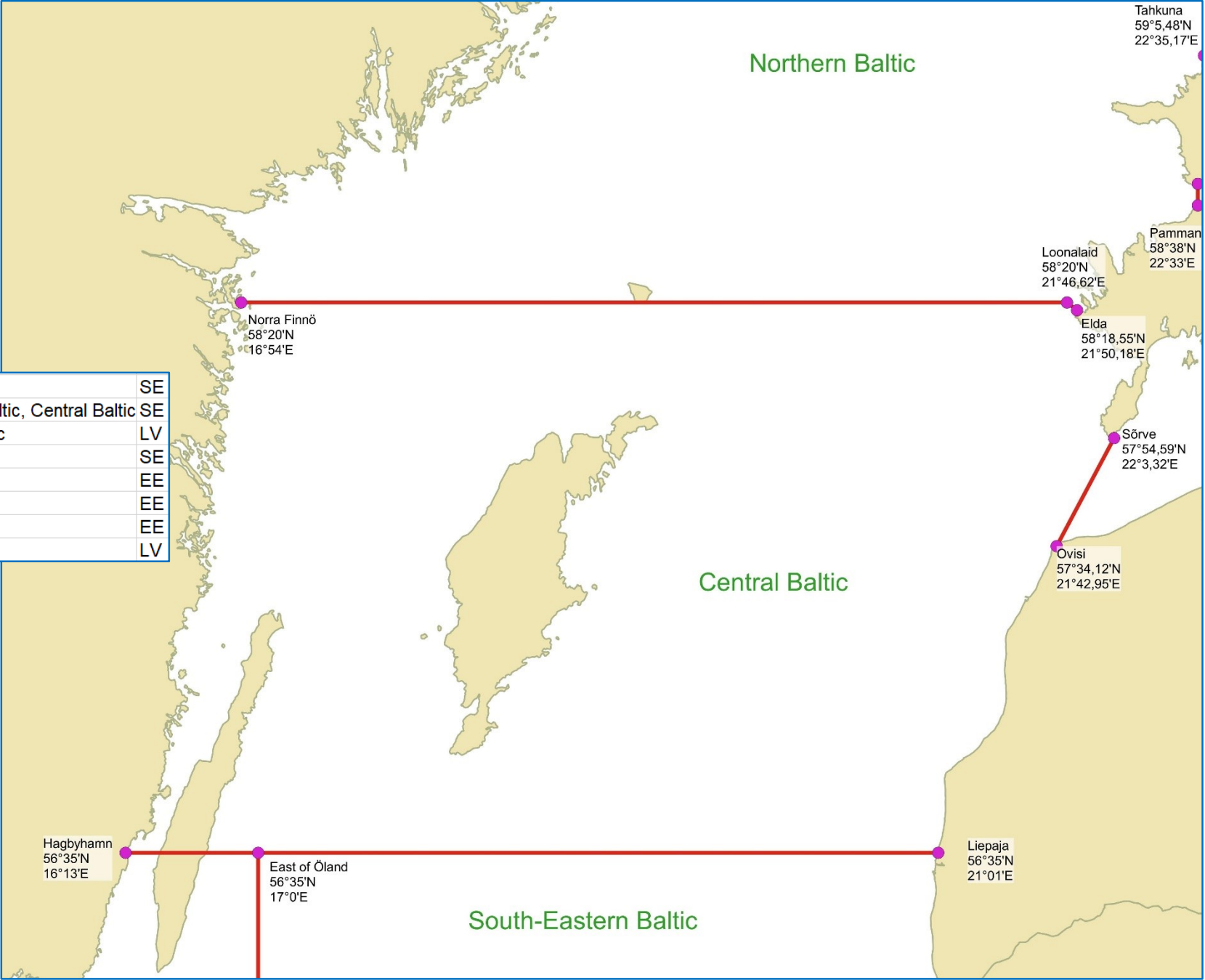
3	Gilbjerg Hoved	56°7.7'N	12°16.44'E	Kattegat, The Sound	DK
4	Kullen Point	56°18.15'N	12°26.73'E	Kattegat, The Sound	SE
5	Røsnæs	55°44.6'N	10°52.1'E	Kattegat, The Great Belt	DK
6	Fyns Hoved	55°37.24'N	10°35.45'E	Kattegat, The Great Belt	DK
7	Æbelø	55°38.77'N	10°9.76'E	Kattegat, The Little Belt	DK
8	Bjørnsknude	55°41.81'N	10°1.78'E	Kattegat, The Little Belt	DK
9	Falsthöft	54°46.79'N	9°57.42'E	The Little Belt, Western Baltic	DE
10	Vejsnæs Nakke	54°49.03'N	10°25.39'E	The Little Belt, Western Baltic	DK
11	Dovns Klint	54°43.33'N	10°41.62'E	The Great Belt, Western Baltic	DK
12	Kappel	54°46'N	11°0'E	The Great Belt, Western Baltic	DK
13	Thurø Rev	55°1.8'N	10°43'E	The Little Belt, The Great Belt	DK
14	Næshoved	54°58.95'N	10°46.17'E	The Little Belt, The Great Belt	DK
15	Stevns Fyr/Lighthouse	55°17.44'N	12°27.22'E	The Sound, Western Baltic	DK
16	Falsterbo Point	55°23.03'N	12°48.98'E	The Sound, Western Baltic	SE
17	Kap Arkona	54°40.82'N	13°26.10'E	Western Baltic, Southern Baltic	DE
18	Glewitzer Fähre	54°14.46'N	13°18.91'E	Western Baltic, Southern Baltic	DE
19	Stahlbrode	54°14.01'N	13°17.52'E	Western Baltic, Southern Baltic	DE



Level 3

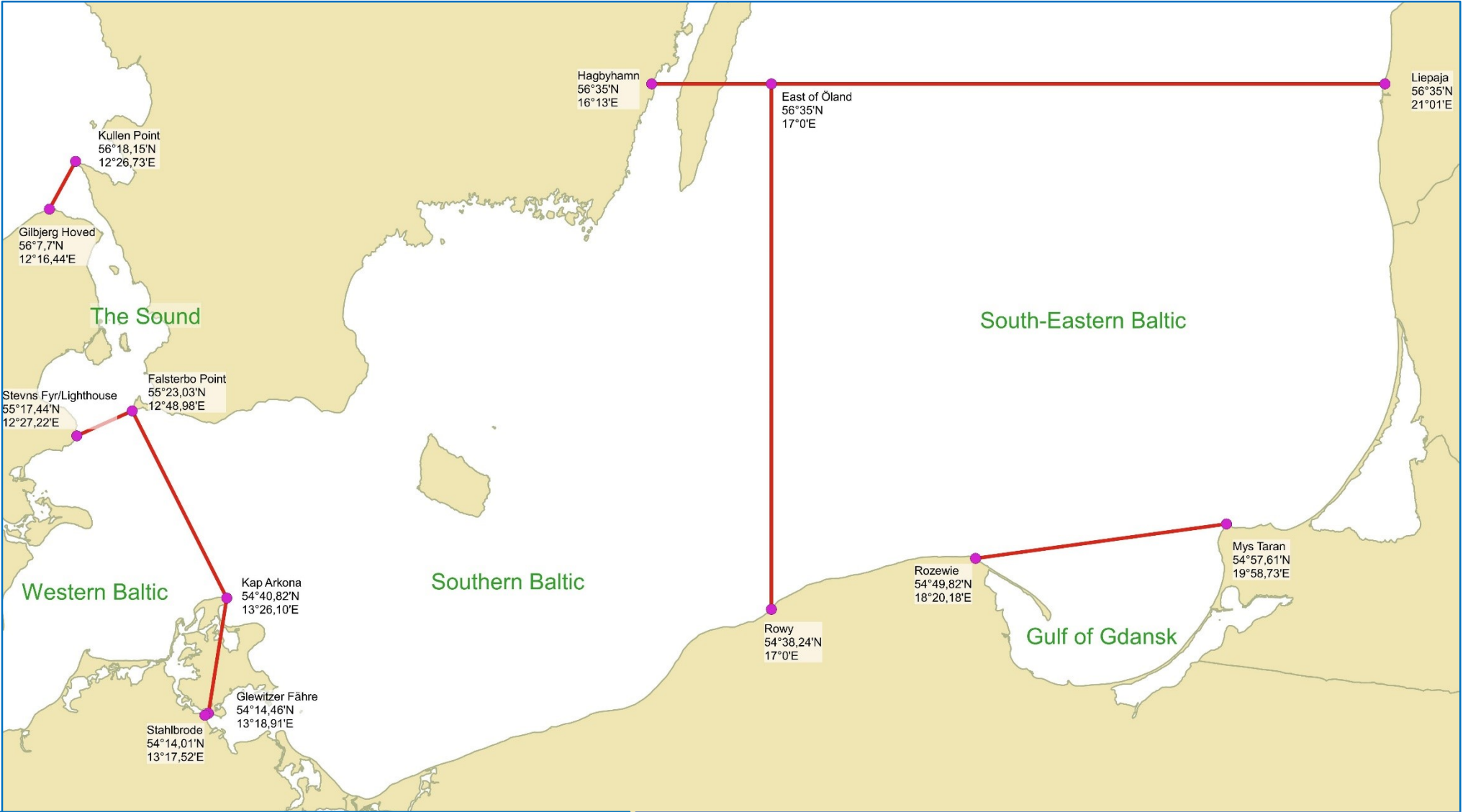
Central Baltic

20	Hagbyhamn	56°35'N	16°13'E	Southern Baltic, Central Baltic	SE
21	East of Öland	56°35'N	17°0'E	South-Eastern Baltic, Southern Baltic, Central Baltic	SE
22	Liepaja	56°35'N	21°01'E	South-Eastern Baltic, Central Baltic	LV
23	Norra Finnö	58°20'N	16°54'E	Central Baltic, Northern Baltic	SE
24	Loonalaids	58°20'N	21°46.62'E	Central Baltic, Northern Baltic	EE
25	Elda	58°18.55'N	21°50.18'E	Central Baltic, Northern Baltic	EE
26	Sörve	57°54.59'N	22°3.32'E	Gulf of Riga, Central Baltic	EE
27	Ovisi	57°34.12'N	21°42.95'E	Gulf of Riga, Central Baltic	LV



Level 3

Southern Baltic,
Gulf of Gdansk,
South –Eastern Baltic



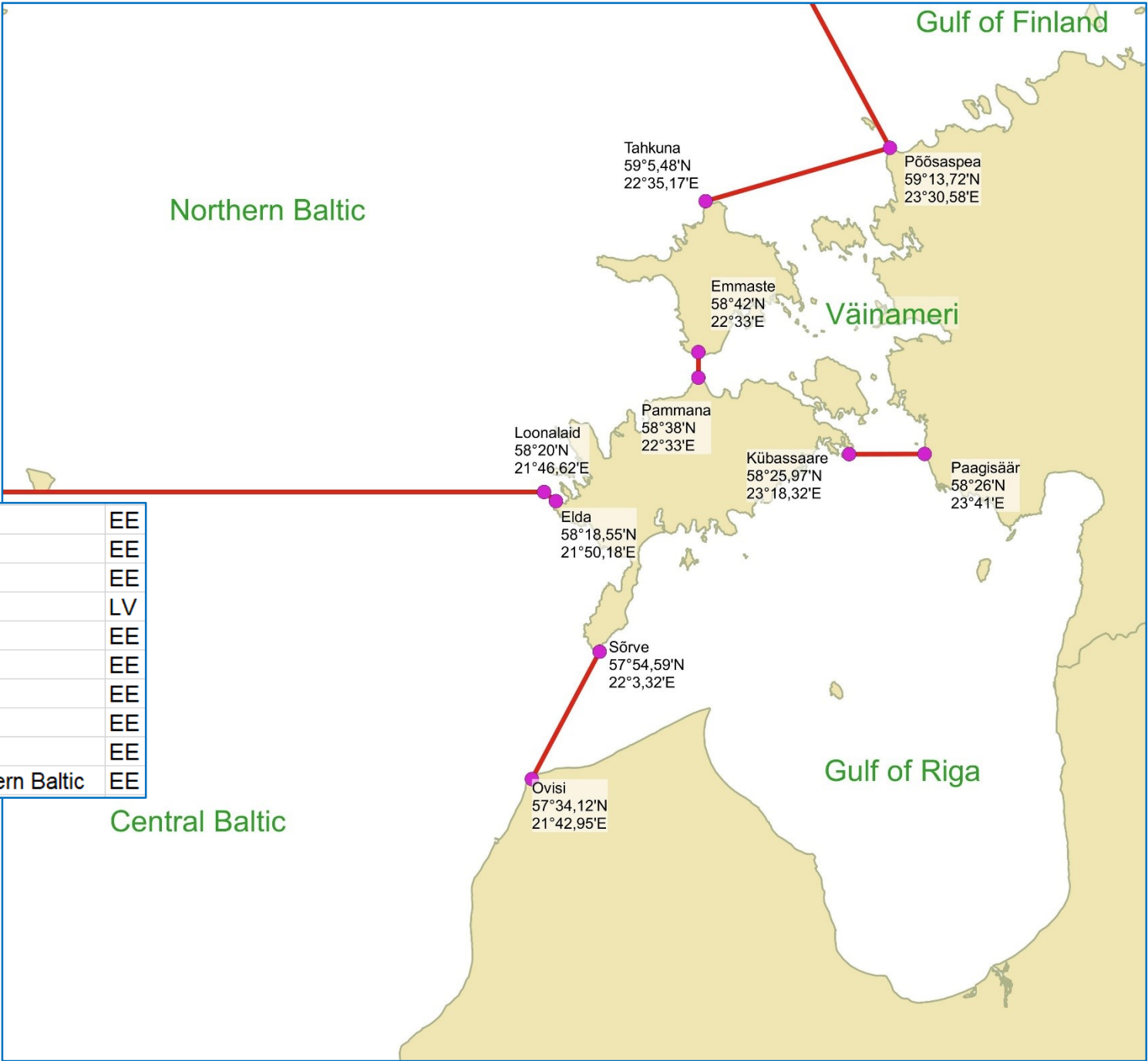
15	Stevns Fyr/Lighthouse	55°17.44'N	12°27.22'E	The Sound, Western Baltic	DK
16	Falsterbo Point	55°23.03'N	12°48.98'E	The Sound, Western Baltic	SE
17	Kap Arkona	54°40.82'N	13°26.10'E	Western Baltic, Southern Baltic	DE
18	Glewitzer Fähre	54°14.46'N	13°18.91'E	Western Baltic, Southern Baltic	DE
19	Stahlbrode	54°14.01'N	13°17.52'E	Western Baltic, Southern Baltic	DE
20	Hagbyhamn	56°35'N	16°13'E	Southern Baltic, Central Baltic	SE
21	East of Öland	56°35'N	17°0'E	South-Eastern Baltic, Southern Baltic, Central Baltic	SE
22	Liepaja	56°35'N	21°01'E	South-Eastern Baltic, Central Baltic	LV

50	Mys Taran	54°57.61'N	19°58.73'E	Gulf of Gdansk, South Eastern Baltic	RU
51	Rozewie	54°49.82'N	18°20.18'E	Gulf of Gdansk, South Eastern Baltic	PL
52	Rowy	54°38.24'N	17°00.00'E	South-Eastern Baltic, Southern Baltic	PL

Level 3

Gulf of Riga,
Väinameri

24	Loonaid	58°20'N	21°46.62'E	Central Baltic, Northern Baltic	EE
25	Elda	58°18.55'N	21°50.18'E	Central Baltic, Northern Baltic	EE
26	Sõrve	57°54.59'N	22°3.32'E	Gulf of Riga, Central Baltic	EE
27	Ovisi	57°34.12'N	21°42.95'E	Gulf of Riga, Central Baltic	LV
28	Kübassaare	58°25.97'N	23°18.32'E	Gulf of Riga, Väinameri	EE
29	Paagisäär	58°26'N	23°41'E	Gulf of Riga, Väinameri	EE
30	Pammana	58°38'N	22°33'E	Väinameri, Northern Baltic	EE
31	Emmaste	58°42'N	22°33'E	Väinameri, Northern Baltic	EE
32	Tahkuna	59°5.48'N	22°35.17'E	Väinameri, Northern Baltic	EE
33	Põõsaspea	59°13.72'N	23°30.58'E	Väinameri, Gulf of Finland, Northern Baltic	EE



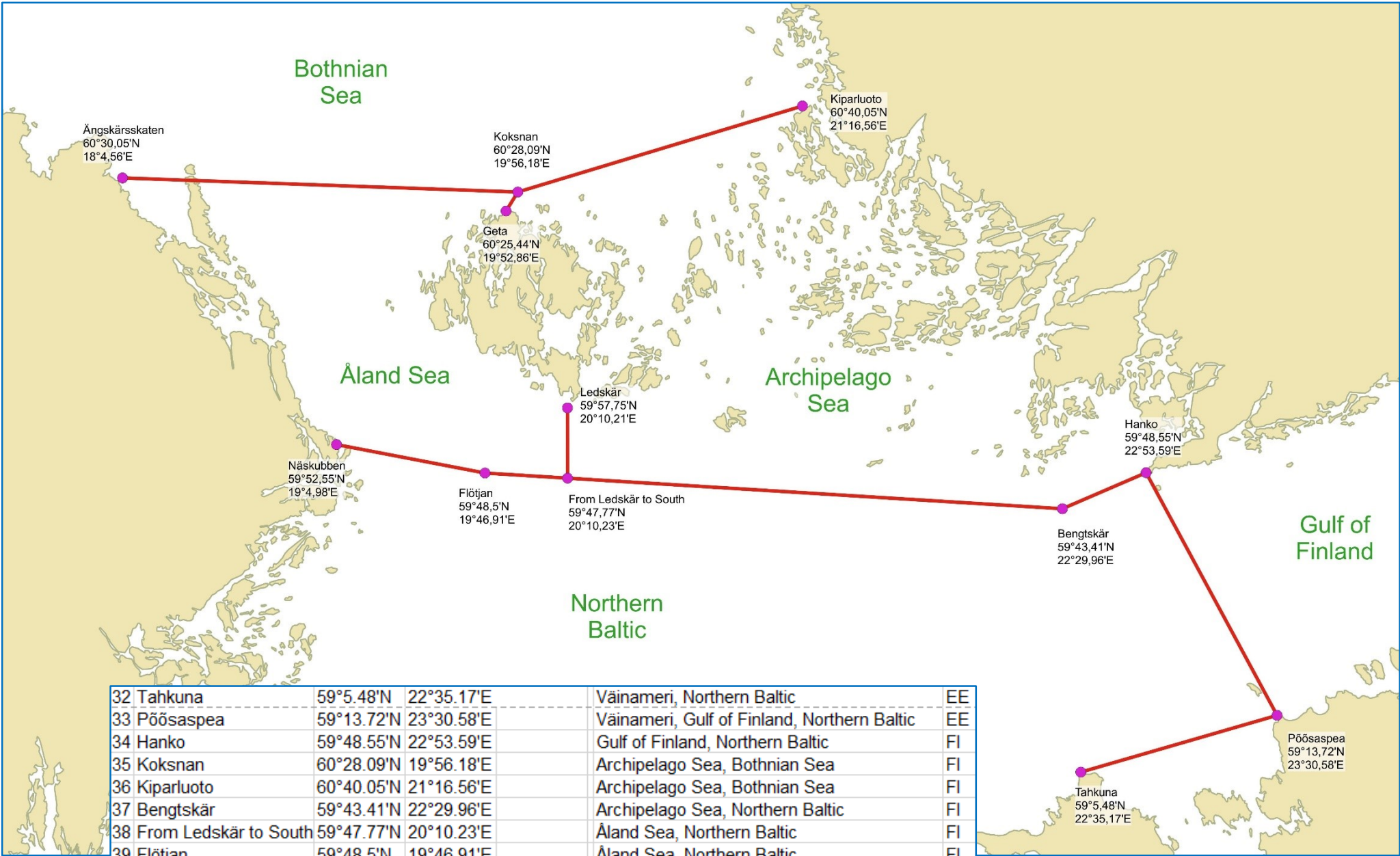
Level 3

Northern Baltic

Gulf of Finland

Archipelago Sea

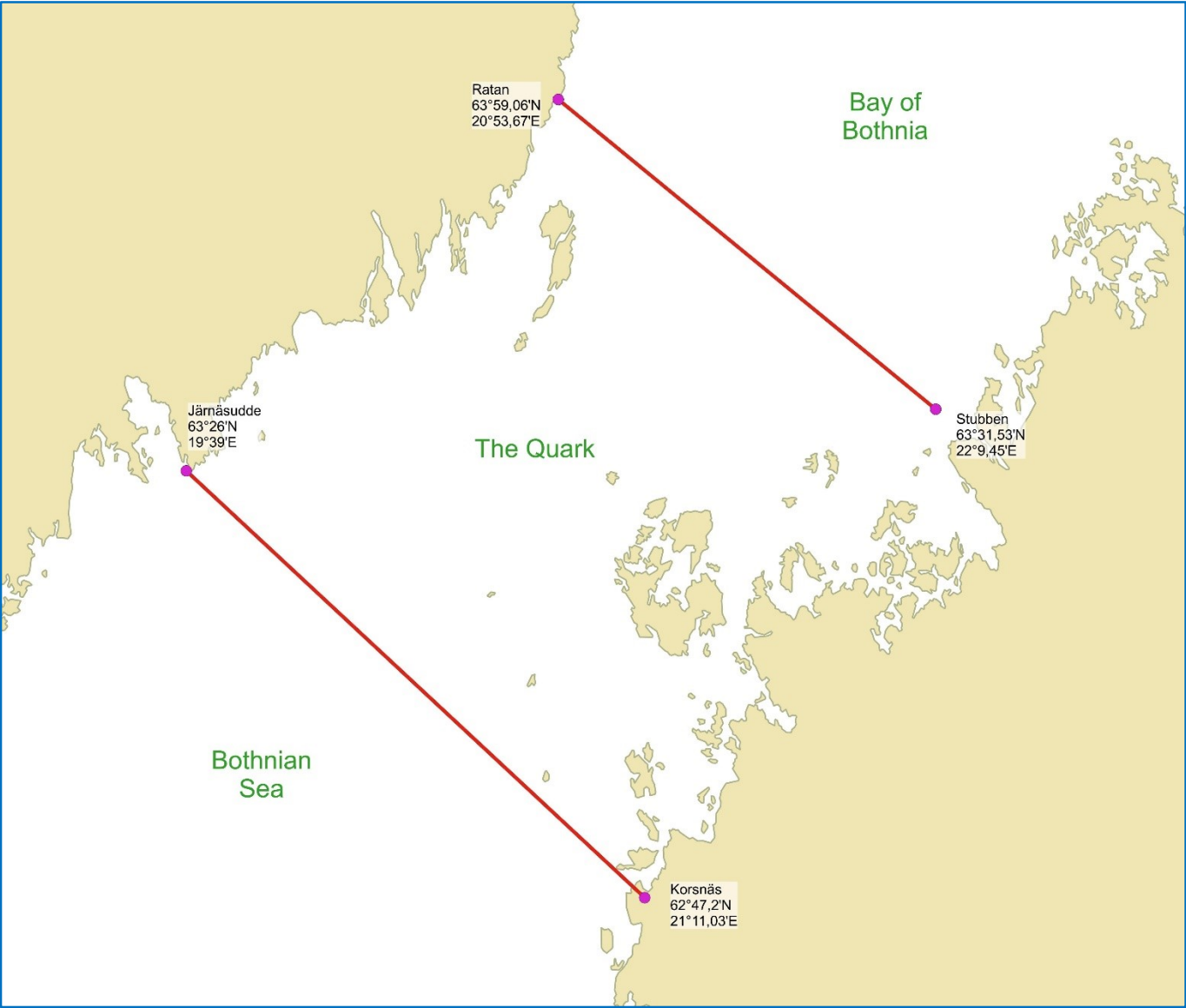
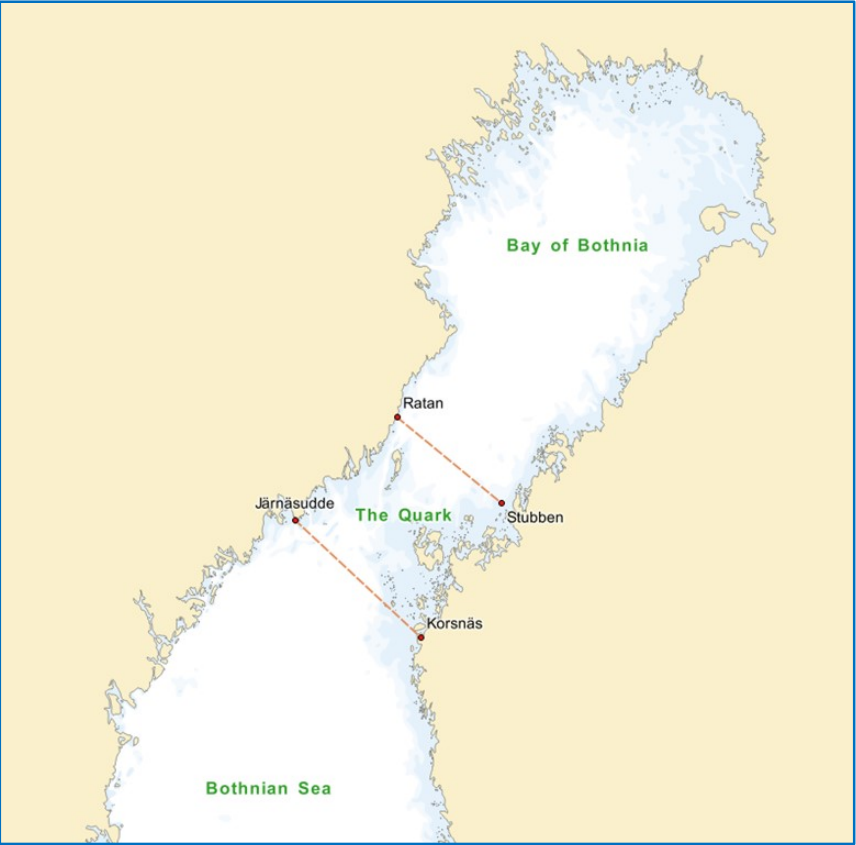
Åland Sea



32	Tahkuna	59°5.48'N	22°35.17'E	Väinameri, Northern Baltic	EE
33	Pöösaspea	59°13.72'N	23°30.58'E	Väinameri, Gulf of Finland, Northern Baltic	EE
34	Hanko	59°48.55'N	22°53.59'E	Gulf of Finland, Northern Baltic	FI
35	Koksnan	60°28.09'N	19°56.18'E	Archipelago Sea, Bothnian Sea	FI
36	Kiparluoto	60°40.05'N	21°16.56'E	Archipelago Sea, Bothnian Sea	FI
37	Bengtskär	59°43.41'N	22°29.96'E	Archipelago Sea, Northern Baltic	FI
38	From Ledsjär to South	59°47.77'N	20°10.23'E	Åland Sea, Northern Baltic	FI
39	Flötjan	59°48.5'N	19°46.91'E	Åland Sea, Northern Baltic	FI
40	Ledsjär	59°57.75'N	20°10.21'E	Archipelago Sea, Åland Sea	FI
41	Geta	60°25.44'N	19°52.86'E	Archipelago Sea, Åland Sea	FI
42	Näs kubben	59°52.55'N	19°4.98'E	Åland Sea, Northern Baltic	SE
43	Ångskärsskatan	60°30.05'N	18°4.56'E	Åland Sea, Bothnian Sea	SE

Level 3

Bothnian Bay
The Quark
Bay of Bothnia



44	Korsnäs	62°47.2'N	21°11.03'E		The Quark, Bothnian Sea	FI
45	Järnäsudde	63°26'N	19°39'E		The Quark, Bothnian Sea	SE
46	Ratan	63°59.06'N	20°53.67'E		The Quark, Bay of Bothnia	SE
46	Stubben	63°31.53'N	22°9.45'E		The Quark, Bay of Bothnia	FI

Annex: Baltic Sea Sub-areas, Level 3, coordinate points

	Name	Lat	Lon	The border point	Country
1	Skagen	57°45.0'N	10°36.0'E	Kattegat, North Sea	DK
2	Knaverstad	57°57.0'N	11°47.5'E	Kattegat, North Sea	SE
3	Gilbjerg Hoved	56°7.7'N	12°16.44'E	Kattegat, The Sound	DK
4	Kullen Point	56°18.15'N	12°26.73'E	Kattegat, The Sound	SE
5	Røsnæs	55°44.6'N	10°52.1'E	Kattegat, The Great Belt	DK
6	Fyns Hoved	55°37.24'N	10°35.45'E	Kattegat, The Great Belt	DK
7	Æbelø	55°38.77'N	10°9.76'E	Kattegat, The Little Belt	DK
8	Bjørnsknude	55°41.81'N	10°1.78'E	Kattegat, The Little Belt	DK
9	Falsthöft	54°46.79'N	9°57.42'E	The Little Belt, Western Baltic	DE
10	Vejsnæs Nakke	54°49.03'N	10°25.39'E	The Little Belt, Western Baltic	DK
11	Dovns Klint	54°43.33'N	10°41.62'E	The Great Belt, Western Baltic	DK
12	Kappel	54°46'N	11°0'E	The Great Belt, Western Baltic	DK
13	Thurø Rev	55°1.8'N	10°43'E	The Little Belt, The Great Belt	DK
14	Næshoved	54°58.95'N	10°46.17'E	The Little Belt, The Great Belt	DK
15	Stevns Fyr/Lighthouse	55°17.44'N	12°27.22'E	The Sound, Western Baltic	DK
16	Falsterbo Point	55°23.03'N	12°48.98'E	The Sound, Western Baltic	SE
17	Kap Arkona	54°40.82'N	13°26.10'E	Western Baltic, Southern Baltic	DE
18	Glewitzer Fähr	54°14.46'N	13°18.91'E	Western Baltic, Southern Baltic	DE
19	Stahlbrode	54°14.01'N	13°17.52'E	Western Baltic, Southern Baltic	DE
20	Hagbyhamn	56°35'N	16°13'E	Southern Baltic, Central Baltic	SE

21	East of Öland	56°35'N	17°0'E	South-Eastern Baltic, Southern Baltic,	SE
22	Liepāja	56°35'N	21°01'E	South-Eastern Baltic, Central Baltic	LV
23	Norra Finnö	58°20'N	16°54'E	Central Baltic, Northern Baltic	SE
24	Loonalaid	58°20'N	21°46.62'E	Central Baltic, Northern Baltic	EE
25	Elda	58°18.55'N	21°50.18'E	Central Baltic, Northern Baltic	EE
26	Sörve	57°54.59'N	22°3.32'E	Gulf of Riga, Central Baltic	EE
27	Ovisi	57°34.12'N	21°42.95'E	Gulf of Riga, Central Baltic	LV
28	Kübassaare	58°25.97'N	23°18.32'E	Gulf of Riga, Väinameri	EE
29	Paagisäär	58°26'N	23°41'E	Gulf of Riga, Väinameri	EE
30	Pammana	58°38'N	22°33'E	Väinameri, Northern Baltic	EE
31	Emmaste	58°42'N	22°33'E	Väinameri, Northern Baltic	EE
32	Tahkuna	59°5.48'N	22°35.17'E	Väinameri, Northern Baltic	EE
33	Põõsaspea	59°13.72'N	23°30.58'E	Väinameri, Gulf of Finland, Northern B	EE
34	Hanko	59°48.55'N	22°53.59'E	Gulf of Finland, Northern Baltic	FI
35	Koksna	60°28.09'N	19°56.18'E	Archipelago Sea, Bothnian Sea	FI
36	Kiparluoto	60°40.05'N	21°16.56'E	Archipelago Sea, Bothnian Sea	FI
37	Bengtskär	59°43.41'N	22°29.96'E	Archipelago Sea, Northern Baltic	FI
38	From Ledskär to South	59°47.77'N	20°10.23'E	Åland Sea, Northern Baltic	FI
39	Flötjan	59°48.5'N	19°46.91'E	Åland Sea, Northern Baltic	FI
40	Ledskär	59°57.75'N	20°10.21'E	Archipelago Sea, Åland Sea	FI

40	Ledskär	59°57.75'N	20°10.21'E	Archipelago Sea, Åland Sea	FI	
41	Geta	60°25.44'N	19°52.86'E	Archipelago Sea, Åland Sea	FI	
42	Näskubben	59°52.55'N	19°4.98'E	Åland Sea, Northern Baltic	SE	
43	Ängskärsskatan	60°30.05'N	18°4.56'E	Åland Sea, Bothnian Sea	SE	
44	Korsnäs	62°47.2'N	21°11.03'E	The Quark, Bothnian Sea	FI	
45	Järnäsudde	63°26'N	19°39'E	The Quark, Bothnian Sea	SE	
46	Ratan	63°59.06'N	20°53.67'E	The Quark, Bay of Bothnia	SE	
46	Stubben	63°31.53'N	22°9.45'E	The Quark, Bay of Bothnia	FI	
48	Ristinge Hale	54°50.16'N	10°35.92'E	The Little Belt, Western Baltic	DK	
49	Ærøs Hale	54°50.82'N	10°32.19'E	The Little Belt, Western Baltic	DK	
50	Mys Taran	54°57.61'N	19°58.73'E	Gulf of Gdansk, South Eastern Baltic	RU	
51	Rozewie	54°49.82'N	18°20.18'E	Gulf of Gdansk, South Eastern Baltic	PL	
52	Rowy	54°38.24'N	17°00.00'E	South-Eastern Baltic, Southern Baltic	PL	
	· All lines between the given coordinates in the following table is to be considered as Geodetic lines					
	· In the event that the end coordinate of a line does not end up on mainland the lines can be extended up on land.					